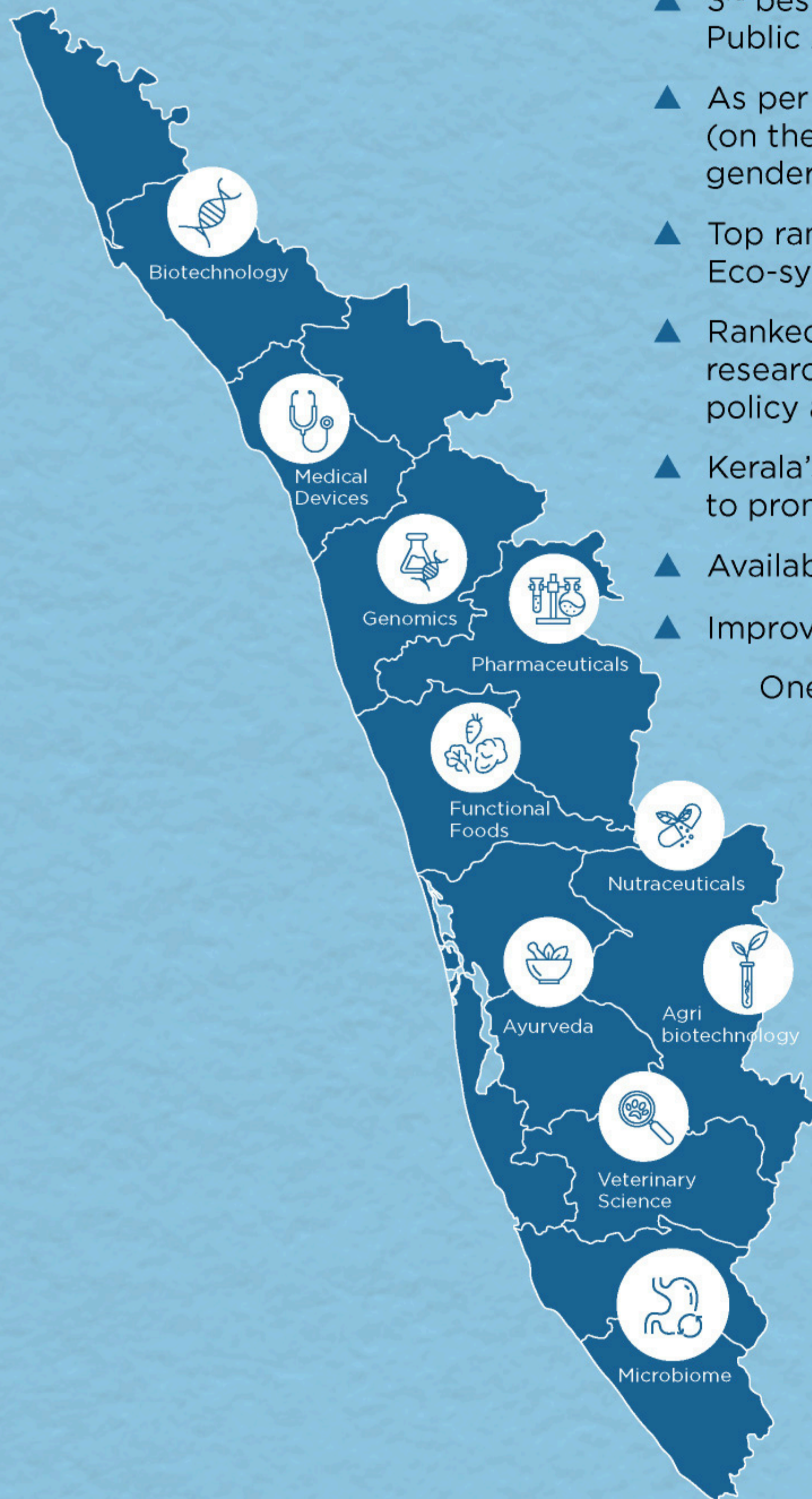


## THE KERALA ADVANTAGE

- ▲ Ranked no. 1 in case of driving business reforms, declared in 2024
- ▲ 3<sup>rd</sup> best governed state, according to the Public Affairs Index (PAI) 2022
- ▲ As per SDG of NITI Aayog, Kerala is a top ranked state (on the parameters of good health, reduced hunger, gender equality and quality education)
- ▲ Top ranked in affordable talent in Global Startup Eco-system Report (GSER Asia, 2022)
- ▲ Ranked 4<sup>th</sup> in the GSER Global ranking, based on research driven by Startup Genome, the world's leading policy advisory and research firm
- ▲ Kerala's Integrated Industrial Policy 2023 offers incentives to promote responsible investment and manufacturing
- ▲ Availability of skilled manpower across all domains
- ▲ Improved air and water quality index

One of India's most progressive states in terms of social welfare and quality of life, the 'Kerala model of development' bestows advanced healthcare and education on par with the West. The presence of numerous educational and research institutions also marks out the talent pool available in the state. Kerala leads in the field of primary education, and it has the highest density of science and technology personnel in India.



For investment, leasing enquiries and more information, get in touch with us:

**Kerala Life Sciences Industries Parks Private Limited (KLIP)**

Thonnakkal, Mangalapuram PO

Thiruvananthapuram 695 317, Kerala, India

Tel : 00 91 471 2318 922, Mob : 00 91 91889 11207

Email id : klip@bio360.in / bde@bio360.in

Follow us : [www.linkedin.com/company/bio-360-lifesciences-park](https://www.linkedin.com/company/bio-360-lifesciences-park)

[www.facebook.com/Bio360Trivandrum](https://www.facebook.com/Bio360Trivandrum)



[www.bio360.in](http://www.bio360.in)



# THE COMPREHENSIVE ECOSYSTEM FOR LIFE SCIENCES.





## THE BUILDING BLOCKS OF OUR ECOSYSTEM

Kerala Life Sciences Industries Parks (P) Ltd (KLIP) is an initiative of the Govt. of Kerala, Kerala State Industrial Development Corporation (KSIDC) and Kerala Industrial Infrastructure Development Corporation (KINFRA). Spread over 200 acres, the Park is dedicated to upstream areas of translational research in the Life Sciences domain. The entrepreneurs and industries in this domain can make use of the park's facilities to research, incubate, manufacture and commercialise their products and services. The Park has exclusive skill development centres as well to support their requirements of skilled work force in the Life Science sector.

### FOCUS AREAS

- ▲ Biotechnology
- ▲ Medical Devices
- ▲ Pharmaceuticals
- ▲ Genomics
- ▲ Nutraceuticals
- ▲ Functional Foods
- ▲ Ayurveda
- ▲ Agri biotechnology
- ▲ Veterinary Science
- ▲ Microbiome



## UNIQUE ADVANTAGES OF THE KLIP

- ▲ Leasable plots/built-up space with core facilities
- ▲ Proximity centres of excellence & well-known R&D institutions
- ▲ Dedicated single window clearance board
- ▲ International Seaport (24 kms)
- ▲ International Airport (21 kms)
- ▲ Located along National Highway
- ▲ Availability of skilled manpower through skill development centres



## PROPOSED ATTRACTIONS FOR LIFE SCIENCE COMPANIES

- ▲ Viral Disease Diagnostics & Research Facilities
- ▲ Animal House - Small and large animal house
- ▲ Biotech Incubation Centre
- ▲ Medical Devices Park
- ▲ Prototyping Lab
- ▲ Centralised Evaluation Facility
- ▲ Knowledge Resource Centre: Patent filing, medical device regulations/certifications compliant to national & international standards etc.
- ▲ Skill Development Centre
- ▲ Effluent Treatment Plant



## ONGOING PROJECTS

- ▲ Institute of Advanced Virology - research, diagnose and manage emerging and re-emerging infectious viral diseases
- ▲ Biotech Research cum Training Centre (BRTC) and small animal facility by Kerala Veterinary University
- ▲ Medical Device Park (MedSpark) - R&D and manufacturing of medical devices, skill development centre, large animal facility and Business Incubation Centre
- ▲ Innovation cum Incubation Centre - prebuilt labs, tenancy modules, bio processing facilities, Biotech Labs, offices, meeting room, common processing and analytical facility